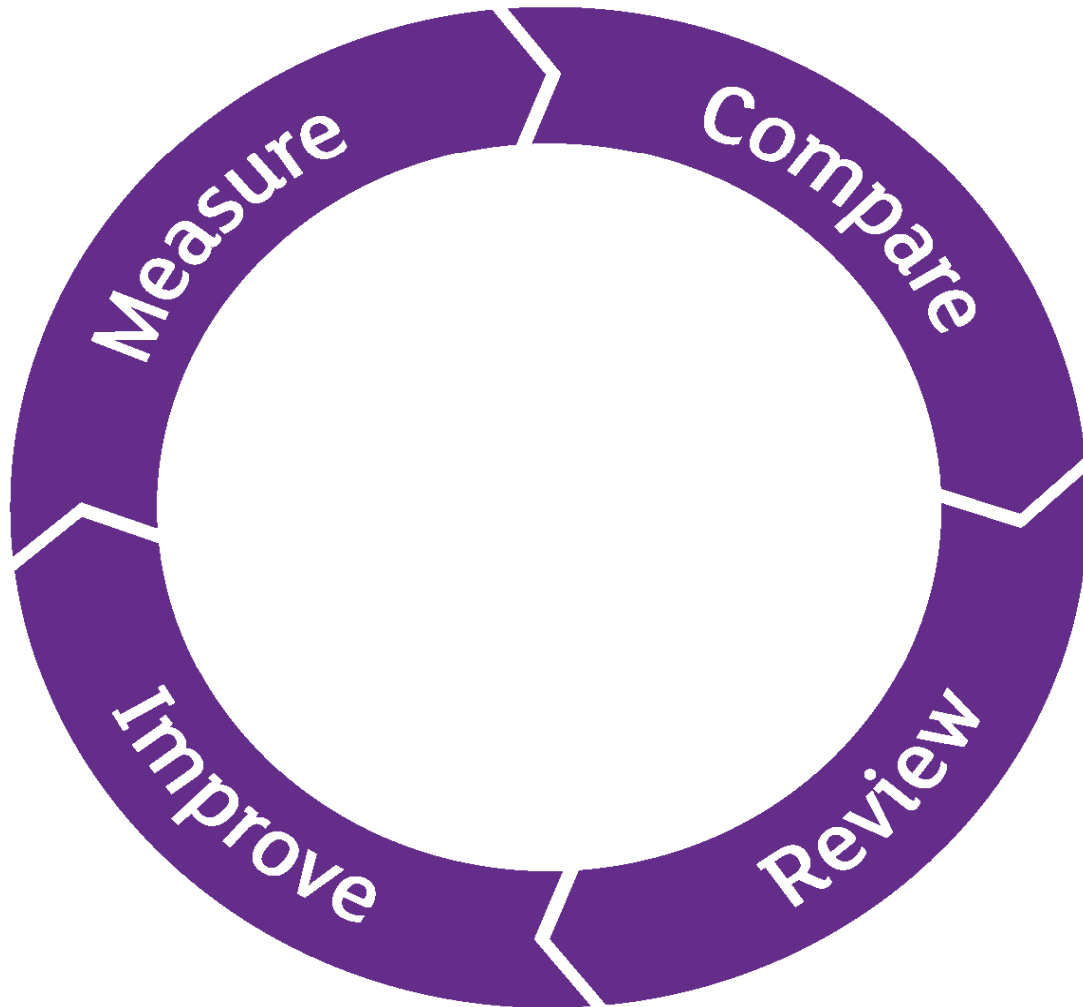


Analytics & Research

# accountancy benchmarking club

2017 - National Summary



## INTRODUCTION

This national summary shows aggregate results from the CIPFA Accountancy Benchmarking Club 2017. Unless otherwise stated, the data in this report is the average of all respondents who provided benchmarking data.

## RESPONDENT PROFILE

There were 30 respondents to the 2017 Accountancy Benchmarking Club.

Authority Type	Total
Unitary Authority	19
County Council	6
District Council	3
Other	2

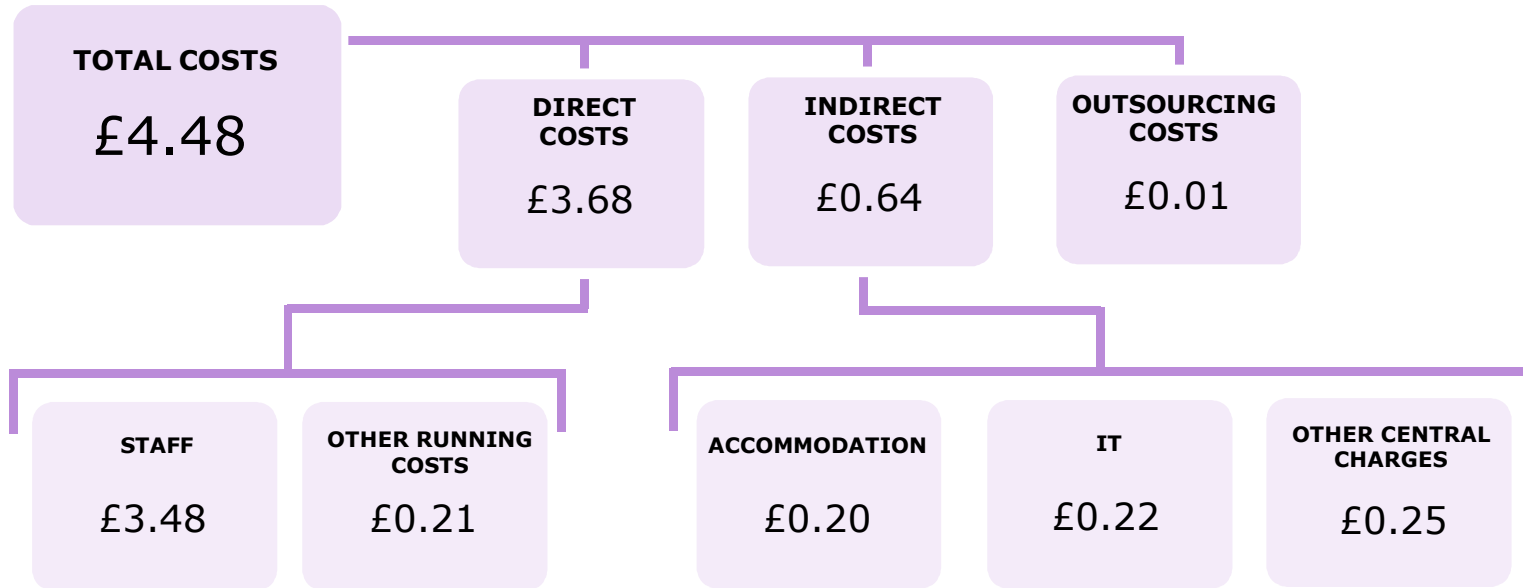
### PLEASE NOTE

You have received this report because your Authority is a member of the Accountancy Benchmarking Club but did not submit data in 2017. If you would be interested in receiving a full report, CIPFA would be happy to process data received by the end of the year.

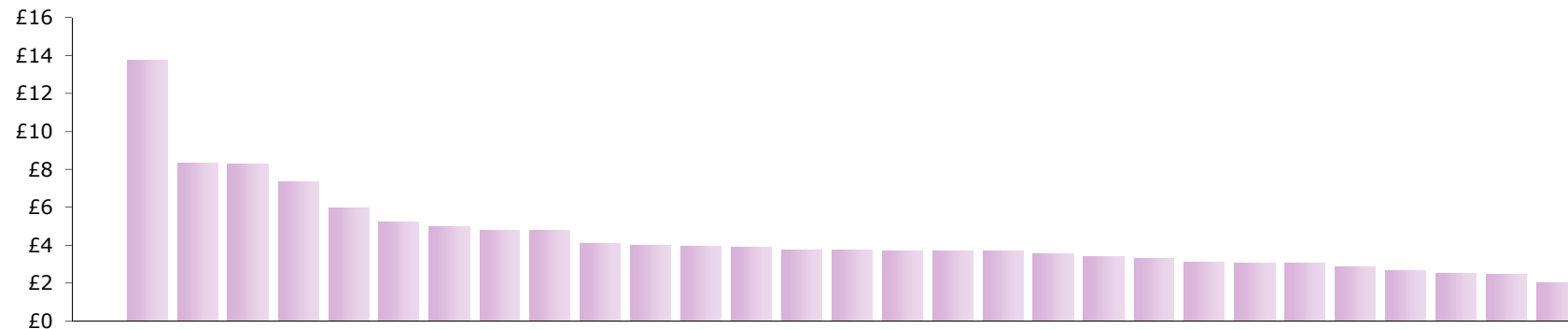
If you are still interested in returning data, please contact [benchmarking@cipfa.org](mailto:benchmarking@cipfa.org) or call Julia Kairis on 0207 543 5763.

## Cost Analysis by Type of Cost per £'k Gross Revenue Turnover

Respondent average cost

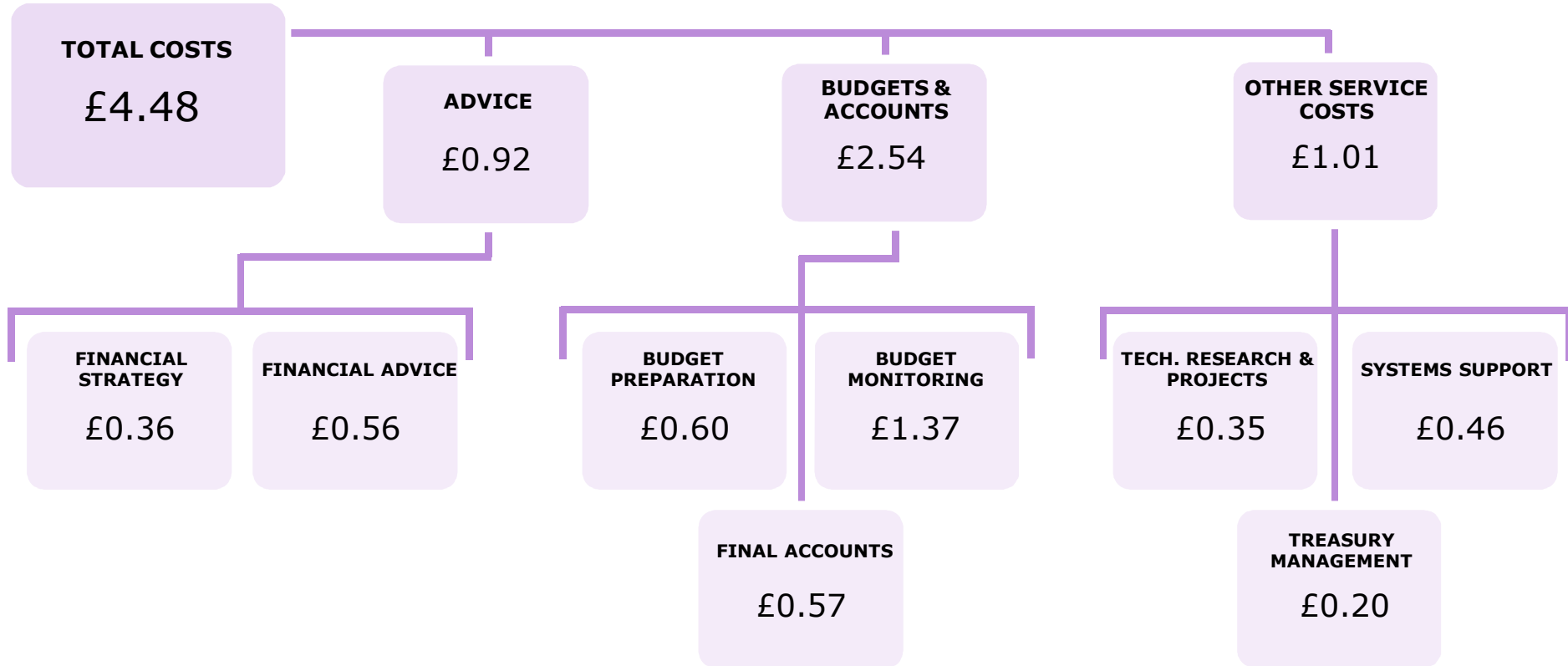


## Individual respondents' total costs per £'k of gross revenue turnover



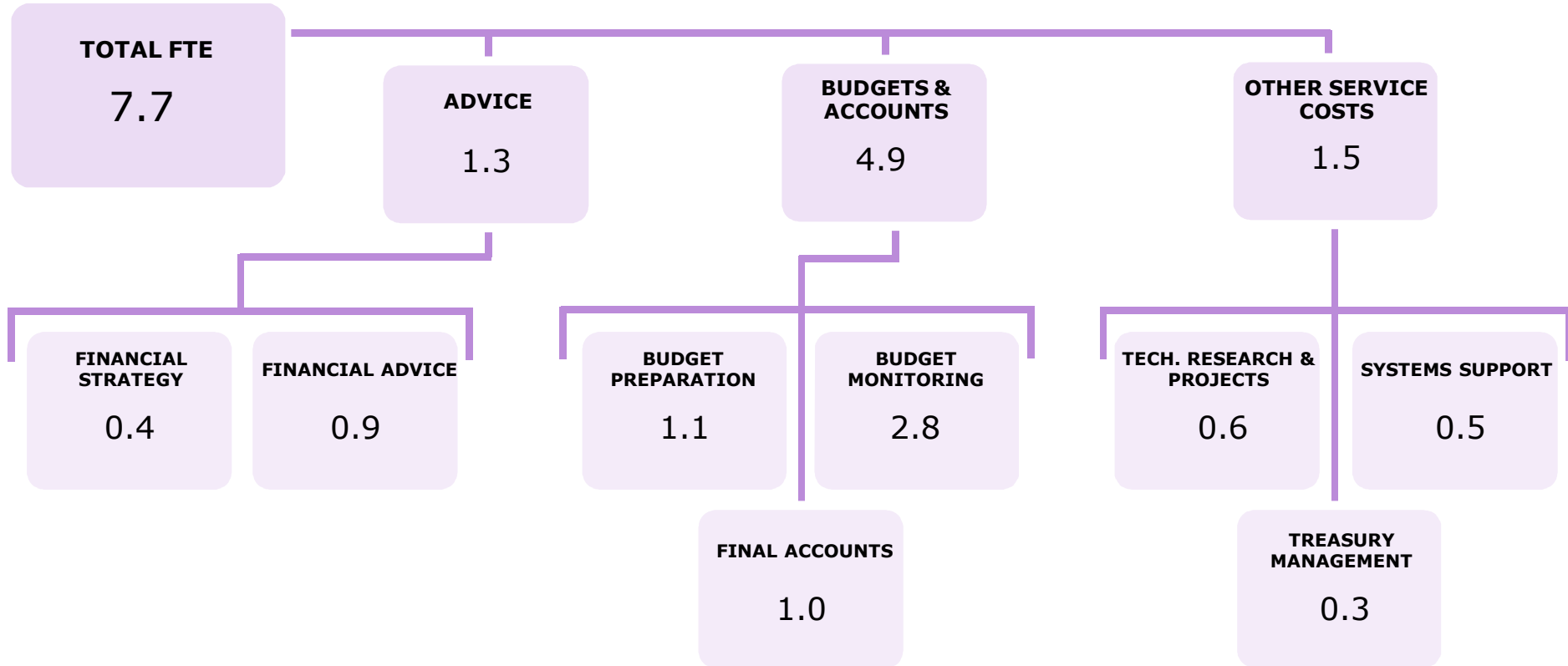
## Cost Analysis by Type of Service per £'k Gross Revenue Turnover

Respondent average cost

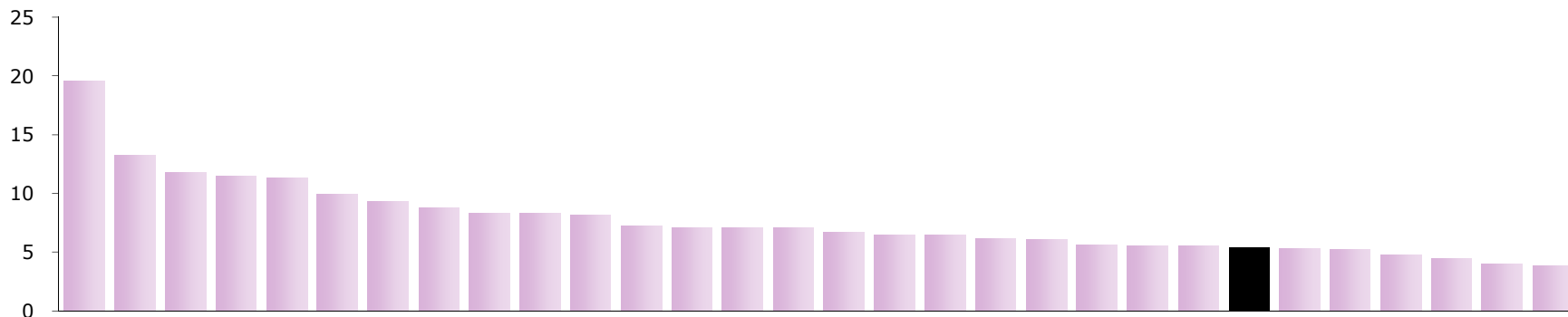


## FTE Analysis by Type of Service per £100m Gross Revenue Turnover

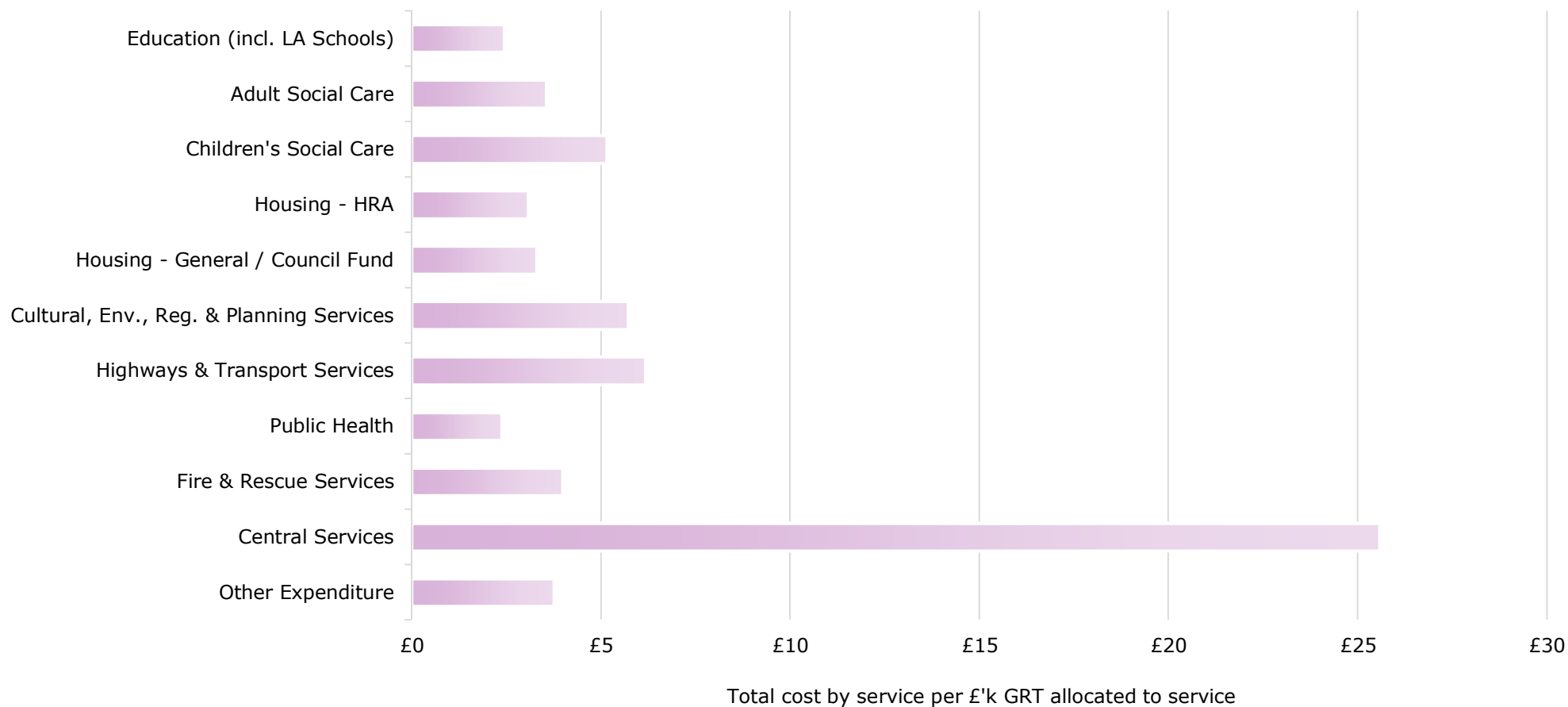
Respondent average FTE



### Individual respondents' total FTE per £100m of gross revenue turnover

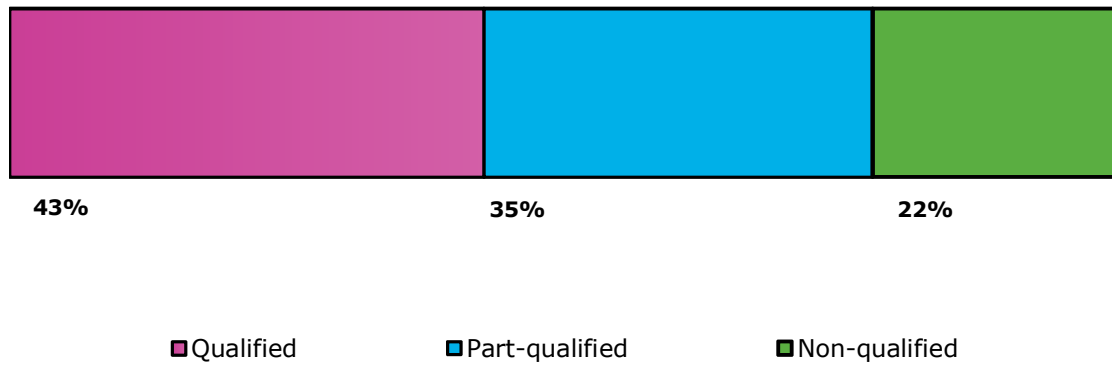


## Accountancy Cost by Service Area per £'k Gross Revenue Turnover Allocated to Service



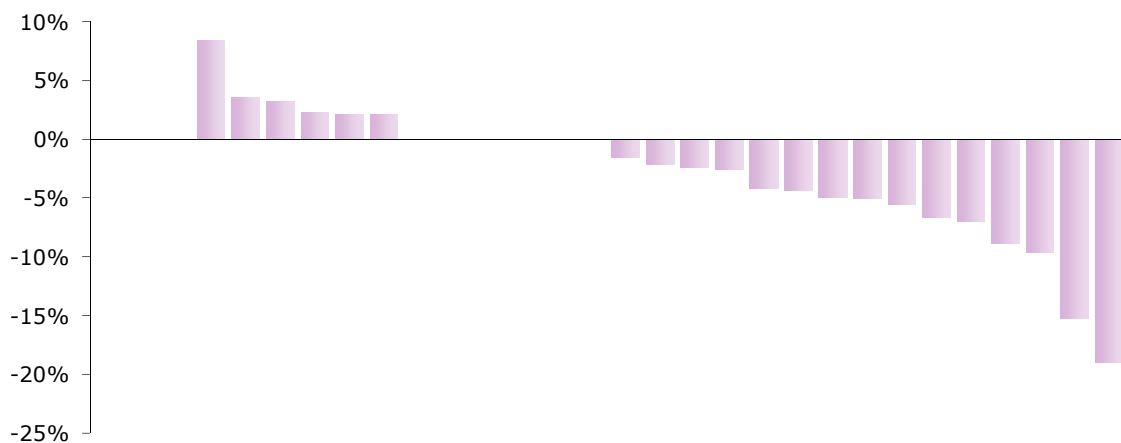
Among respondents, the largest service area is 'Central Services' with an average expenditure of £25.58 per £'k of gross revenue turnover.

## STAFF QUALIFICATIONS (Respondent Average)



On average, 78% of staff are partially or fully qualified.

## INDIVIDUAL RESPONDENTS' STAFF TURNOVER



The average net turnover among respondents in the year to 31 March 2017 was -2.9%.

**CIPFA is the leading professional accountancy body for public services, whether provided by the public or private sectors. It provides education and training in accountancy and financial management, and sets and monitors professional standards.**

CIPFA also provides professional services to public sector organisations and managers. These include: statistical and technical information services, research services, consultancy, advisory networks and forums.

CIPFA holds more data on local government performance than any other organisation in the world and our Corporate Services Benchmarking Clubs are the market leader in local government benchmarking, with high levels of participation and customer satisfaction. Our detailed reports, databases, and interactive tools provide you with solid evidence to support decisions on budget and improvement.

### We also do...

In addition to Accountancy, other Benchmarking Clubs include Treasury Management, Creditors, Debtors and Payroll.

We also provide other Accountancy related services through CIPFAstats and TISonline.

To learn more about other benchmarking clubs in areas such as Adult Social Care and Children's Services, or to see our Value for Money indicator stream, please see our website:

[www.cipfa.org/services/benchmarking](http://www.cipfa.org/services/benchmarking)

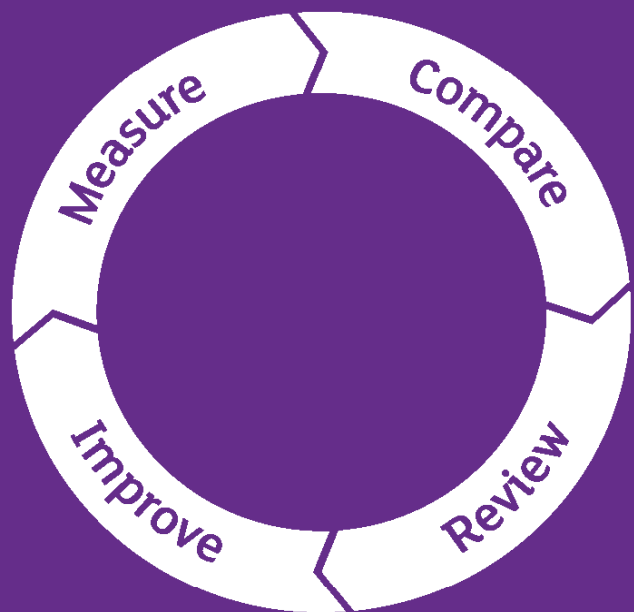
### Contact us

To find out more about our other Corporate Services Benchmarking Clubs please visit our website:

[www.cipfa.org/corporateservices](http://www.cipfa.org/corporateservices)

For more information about how CIPFA Benchmarking can help your organisation or to sign up today contact:

E: [customerliaison@cipfa.org](mailto:customerliaison@cipfa.org) T: 020 7543 5600



Registered office:

CIPFA Business Limited, 77 Mansell Street, London E1 8AN

T: 020 7543 5600 F: 020 7543 5700

[www.cipfa.org](http://www.cipfa.org)

CIPFA Business Limited, the trading arm of CIPFA that provides a range of services to public sector clients. Registered in England and Wales no. 2376684

